

Kalimna

BY THE SEA

25 DIGGERS PARADE ANGLESEA



ARTIST IMPRESSION ONLY

Kalimna

Kalimna is the Aboriginal word for 'beautiful', but its meaning is not simply about beauty that is seen or heard. Kalimna is a sense of peace. When you feel the call to find that peace in a new way of living, to escape suburban clutter and city bustle, *Kalimna By the Sea* is your alternative.

Place yourself a stone's throw from the sand and sea of Anglesea. *Kalimna By the Sea* is beach home living at its best: carefree, uncomplicated, stylish, and flexible.



ARTIST IMPRESSION ONLY

Schedule a sea change - relaxed coastal living awaits.

Kalima's three-storeys homes offer 4 bedrooms, 3 bathrooms, a double garage, and a personal lift servicing all floors.

On the corner of Diggers Parade and McMillan Street the two-storey freestanding home comprises 3 bedrooms, 3 bathrooms and a double garage.

Bedrooms are generous and feature large wardrobes or built-in robes, providing ample storage space. With a large study, rumpus room, and dedicated laundry, these homes offer flexibility and choice for all family types.



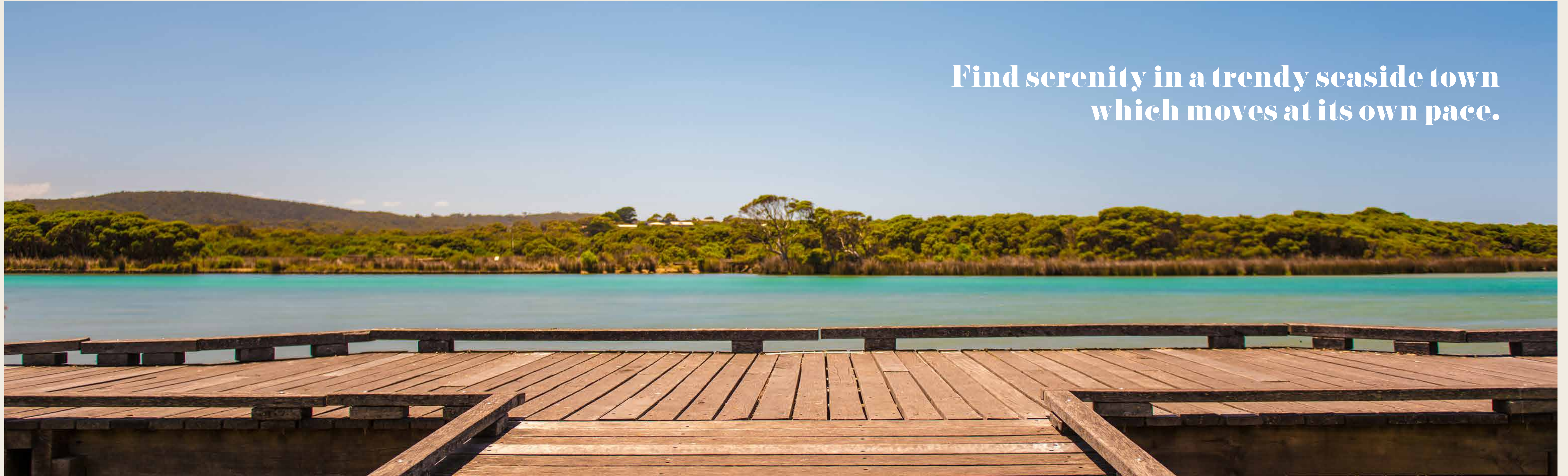
ARTIST IMPRESSION ONLY

The Beach Homes

Kalimna By the Sea beach homes boast 20 square-metre balconies at the upper levels which are accessed off the kitchen, meals and lounge areas and offer great outdoor entertaining space with views of the Anglesea River and the Victorian coast just beyond.

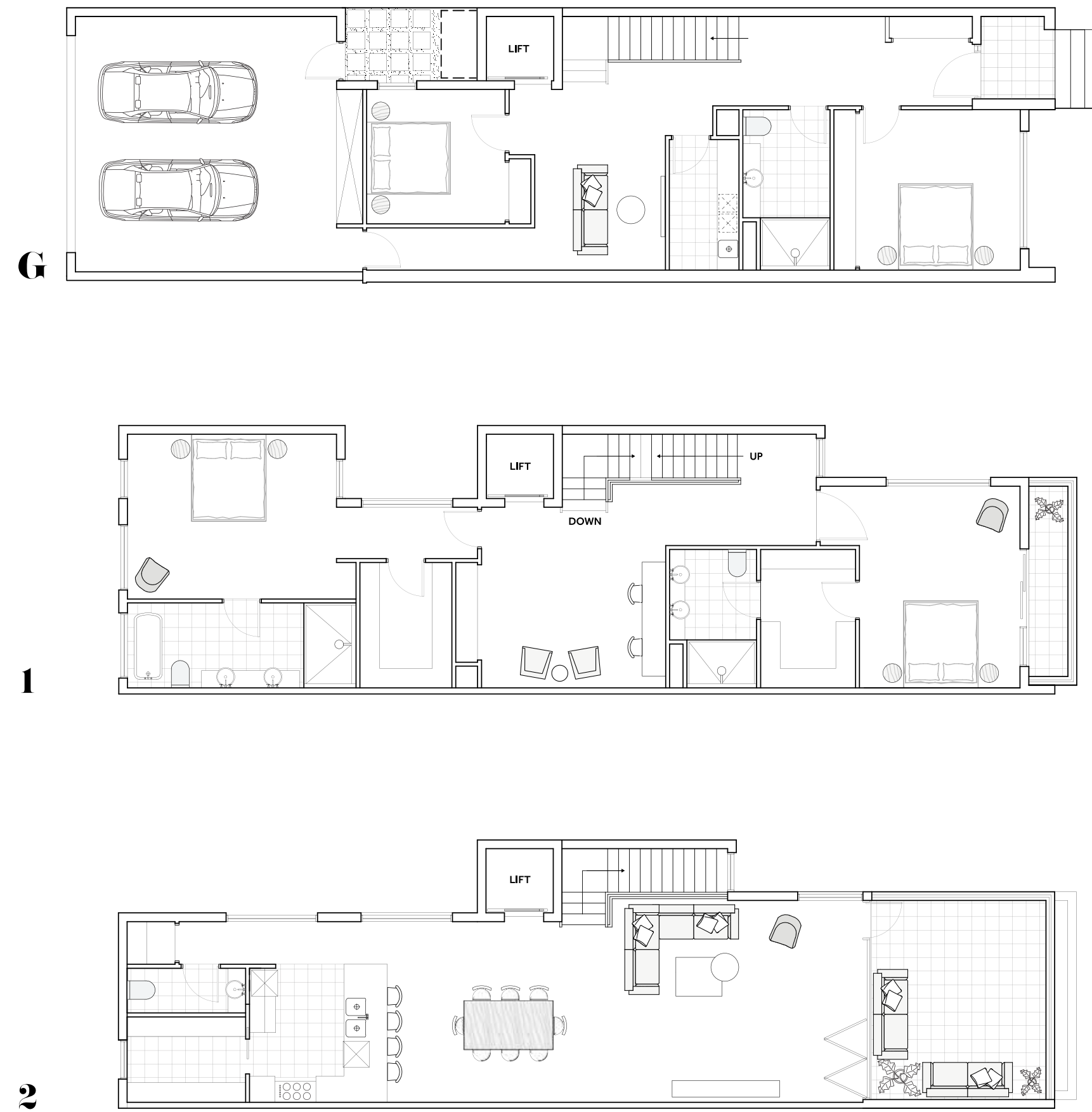
Kalimna By the Sea beach homes are designed to maximise freedom and minimise maintenance. Whether used as a dedicated beach house or full-time home, your seaside spot will be simple to manage.

**Find serenity in a trendy seaside town
which moves at its own pace.**



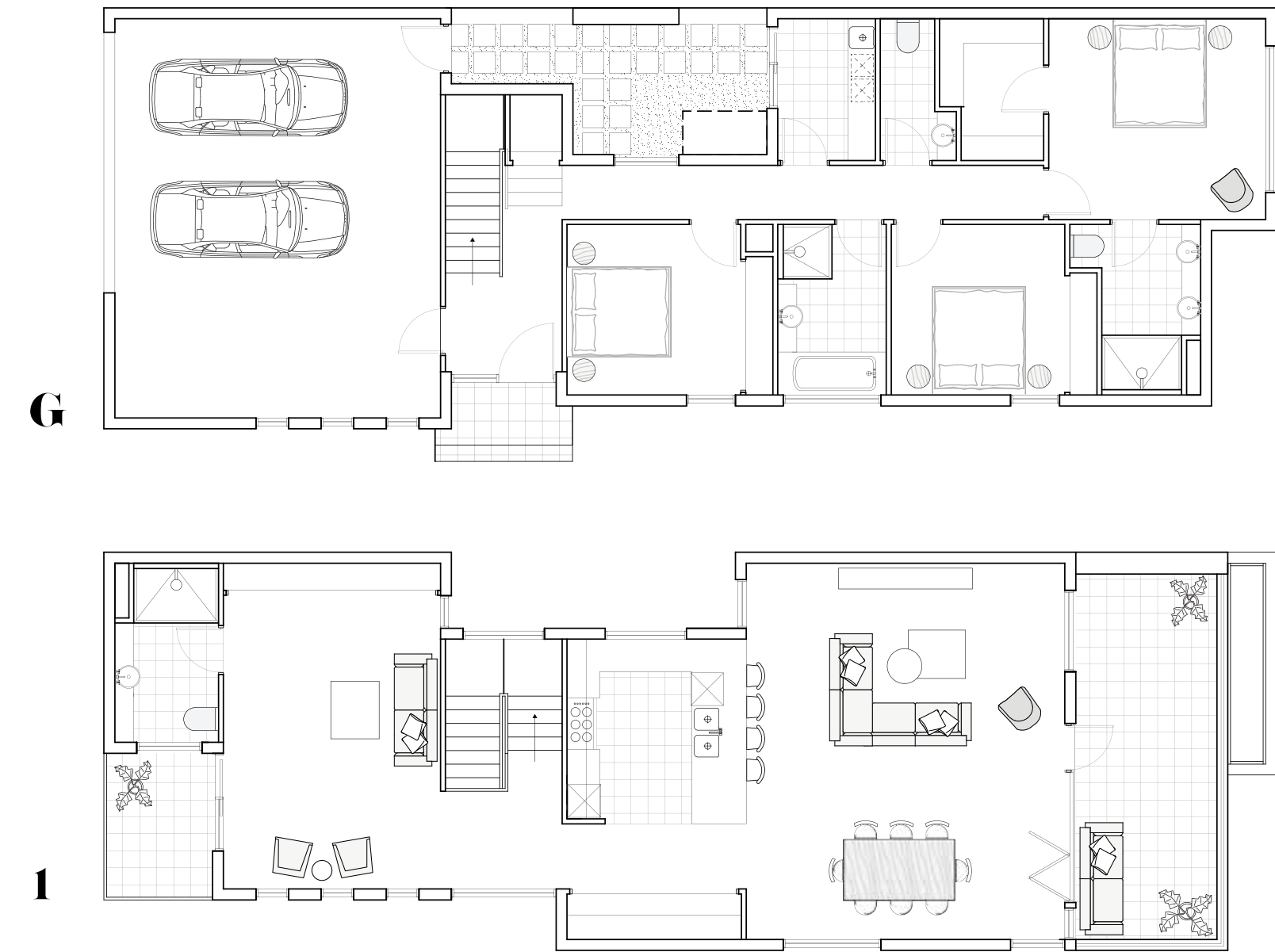
Beach Homes 1 & 2

4 BED 3.5 BATH 2 CAR



Beach Home 3

3 BED 3.5 BATH 2 CAR





Location

All of this in the heart of Anglesea. You're 550 metres from Anglesea Beach, 700 metres from the main shopping strip, and mere footsteps from Anglesea River, cafes and restaurants. Park the car and explore the waterfront at your own pace knowing you're a mere 75 minutes from Melbourne CBD.

Cafes & Shops

Anglesea is a hub for foodies. Become a regular at favourites like Captain Moonlite, a waterside cafe known for its Modern Australian eats and panoramic beach views, or Aireys Pub, set by the water just a short drive from the comfort of home.



Seaside Leisure


Retirement in Anglesea connects you to a new world of freedom and lifestyle.

Become a member at Anglesea Golf Club or play the courses at RACV Torquay, Peppers, Barwon Heads and 13th Beach . Tee-off with friends, schedule a session of lawn bowls at the Anglesea Bowls Club, or sit back and enjoy the coastal views - it's your choice.

Life on the The Great Ocean Road

Anglesea is just one of the delights in a string of coastal pearls which make up the Great Ocean Road. A short drive east will take you to Bells Beach and Torquay, renowned surf and lifestyle hubs, or travel west to Aireys Inlet, Fairhaven, or to the vibrancy of Lorne. Adventure further west will take you to Apollo Bay, the world-famous Otways and of course the Twelve Apostles.



A wide-angle photograph of a coastal landscape. In the foreground, there is a dense thicket of green shrubs and trees, some with bare branches, framing the view. Beyond the vegetation, a sandy beach curves along the shoreline. The ocean is a vibrant turquoise color, with white foam from breaking waves visible. The sky is a clear, deep blue. In the distance, a headland or cliff is visible on the left side of the frame.

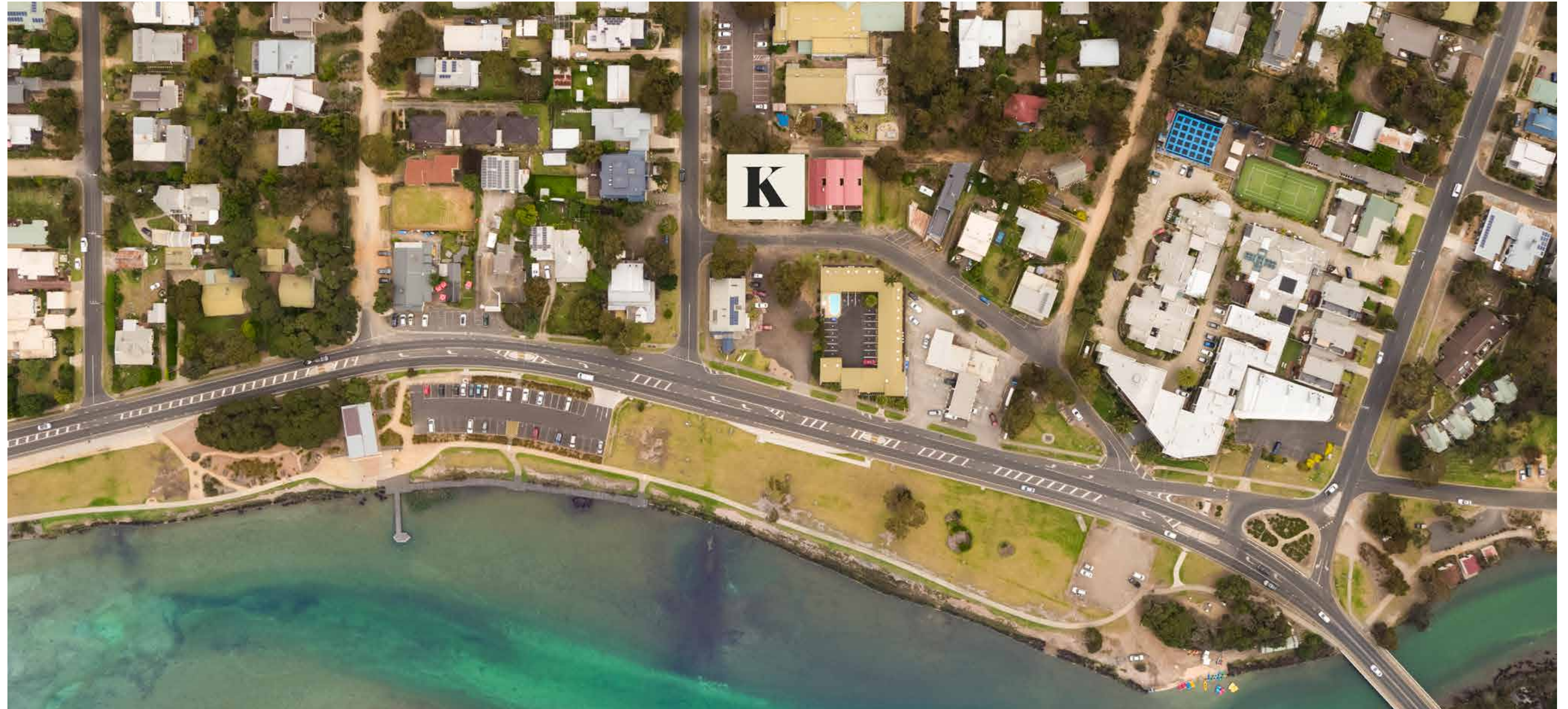
**With the beach at your doorstep,
life will revolve around the sand
and the ocean.**



Andrew Wright
0447 232 688
(03) 5263 2133
andreww@hayden.com.au

Hayden Anglesea
87-89 Great Ocean Road

A PROJECT BY



Kalimna

B Y T H E S E A



INHOUSECREATE

MARKETING PREPARED BY INHOUSECREATE.COM

The information provided is illustrative only and may not be relied upon. Any dimensions, finishes or specifications depicted are subject to change without notice, in particular, the final detail of any townhouse sold will be determined by the Contract of Sale and may differ from the depicted. Whilst every effort is made to provide accurate and complete information, the developer does not warrant or represent that the information is free from errors or omissions or is suitable for your intended use. Subject to any terms implied by law which cannot be excluded, the developer accepts no responsibility for any loss, damage, cost or expense (whether direct or indirect) by you as a result of any error, omission or misrepresentation in information. All information is subject to change without notice.